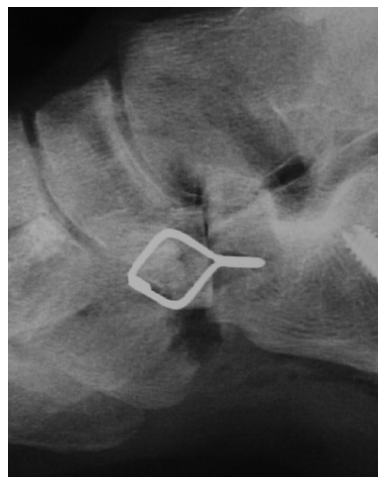


## Indications for Use

The DAHLIA™ Compression Staple System is a highly versatile implant for osteotomies and arthrodeses of the foot. It is particularly useful in calcaneal-cuboid joint fusions, talonavicular fusions, calcaneal osteotomies, arthrodeses of the midfoot joints, midfoot osteotomies, and corrective osteotomies of the forefoot. The DAHLIA™ Compression Staple is a unique low-profile device that delivers a great deal of compression across a joint.

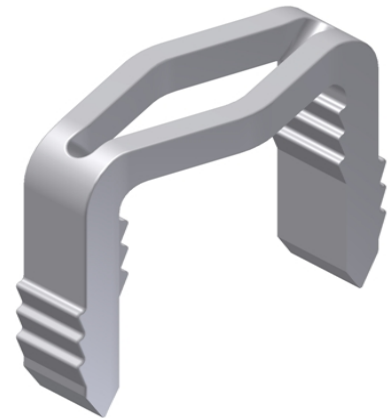
## Surgical Goals

- To provide maximum compression across the fusion site of two bones from an adjacent position.
- To ensure maximum stiffness of the fusion construct while minimizing device profile.
- To utilize a device highly resistant to pullout.



## Implant Features

All DAHLIA™ Compression Staple implant components are manufactured from surgical grade stainless steel for maximum strength and stiffness.



Wide staple legs with external teeth resists pullout and "plowing" through soft bone.

Comprehensive range of widths and leg lengths for more anatomic surgical application.

Staple widths from 13 - 25mm

Leg lengths from 11 - 25mm

## Implant Information

### Compression Staples

REF (SS)	SIZES mm
MOI 16015011	13 X 11 mm
MOI 16015013	13 X 13 mm
MOI 16015017	13 X 17 mm
MOI 16016011	15 X 11 mm
MOI 16016013	15 X 13 mm
MOI 16016015	15 X 15 mm
MOI 16017015	20 X 15 mm
MOI 16017020	20 X 20 mm
MOI 16017025	20 X 25 mm
MOI 16018020	25 X 20 mm