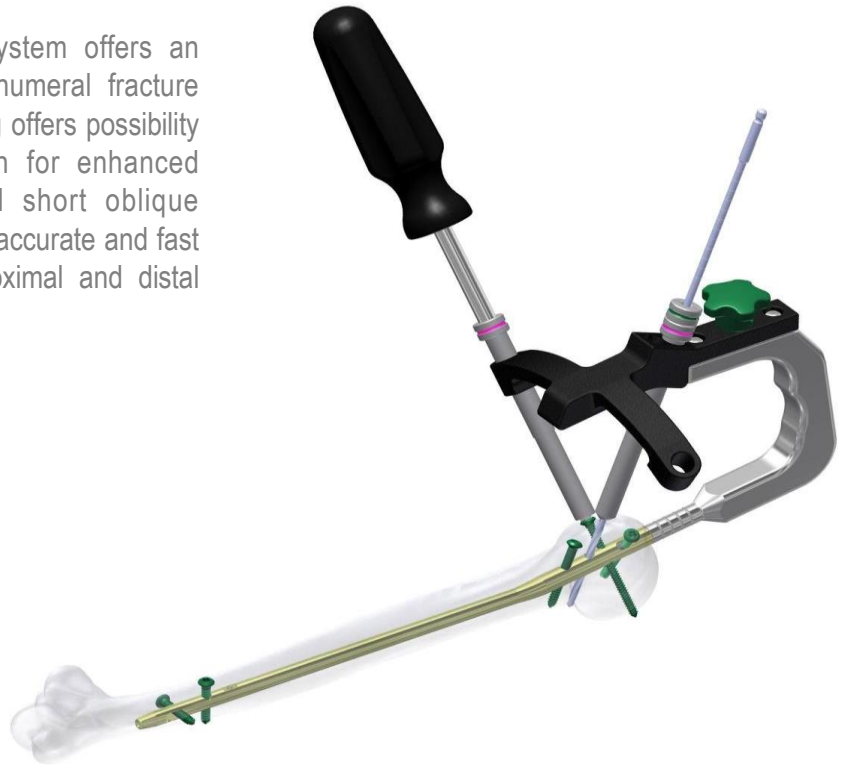


DIVIDE™

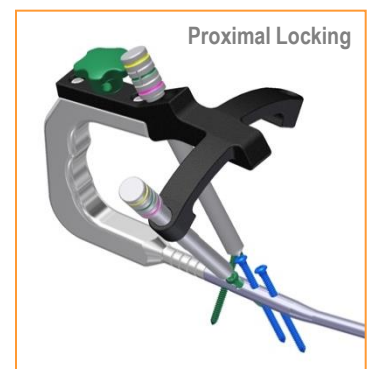
Humerus-C Nailing System

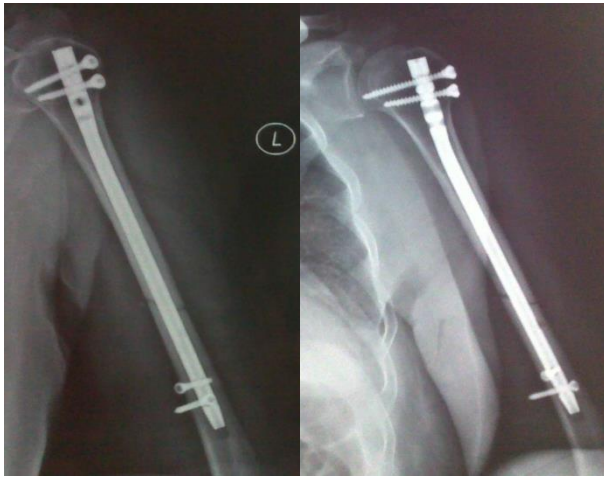
DIVIDE™ Humerus-C Nailing System offers an effective intramedullary nail for humeral fracture management. The proximal locking offers possibility of interfragmentary compression for enhanced stabilization of transverse and short oblique fractures. The system provides an accurate and fast mechanical aiming device for proximal and distal locking.



Features & Benefits

- Minimal invasive technique and biomechanical stability allow early functional exercise.
- **Proximall Locking:** Possibility of interfragmentary compression for enhanced stabilization of transverse and short oblique fractures.
- **Distal Locking:** accurate and dynamic distal locking can be performed via the aiming device.
- Compared to Plates and Screw Osteosynthesis: Less damage to muscle, connective tissue and vasculature, reduced periosteal stripping and concomitant soft tissue damage, designed for load sharing instead of load bearing.
- Cannulated nail design for easy guide insertion.
- All of the implants are available in Titanium Alloy and Stainless Steel.





Indications for Use

DIVIDE™ Humerus-C Nailing System is indicated for proximal humeral and diaphyseal fractures, non-unions, malalignments, pathological humeral fractures, and impending pathological fractures

Implant Information

End Cap, for DIVIDE™ Humerus-C Nail

REF (S. S)	REF (TIT)	SIZE mm
MOI 11708000	MOI 31708000	0
MOI 11708005	MOI 31708005	5
MOI 11708010	MOI 31708010	10
MOI 11708015	MOI 31708015	15



DIVIDE™ Humerus-C Nail, with Compression



REF (S. S)	REF (TIT)	DIA mm	LENGTH mm	TYPE
MOI 11334140	MOI 31334140	7.0	140	Cannulated
MOI 11334160	MOI 31334160	7.0	160	Cannulated
MOI 11334180	MOI 31334180	7.0	180	Cannulated
MOI 11334200	MOI 31334200	7.0	200	Cannulated
MOI 11334220	MOI 31334220	7.0	220	Cannulated
MOI 11334240	MOI 31334240	7.0	240	Cannulated
MOI 11334260	MOI 31334260	7.0	260	Cannulated
MOI 11334280	MOI 31334280	7.0	280	Cannulated
MOI 11334300	MOI 31334300	7.0	300	Cannulated
MOI 11334320	MOI 31334320	7.0	320	Cannulated
MOI 11335140	MOI 31335140	8.0	140	Cannulated
MOI 11335160	MOI 31335160	8.0	160	Cannulated
MOI 11335180	MOI 31335180	8.0	180	Cannulated
MOI 11335200	MOI 31335200	8.0	200	Cannulated
MOI 11335220	MOI 31335220	8.0	220	Cannulated
MOI 11335240	MOI 31335240	8.0	240	Cannulated
MOI 11335260	MOI 31335260	8.0	260	Cannulated
MOI 11335280	MOI 31335280	8.0	280	Cannulated
MOI 11335300	MOI 31335300	8.0	300	Cannulated
MOI 11335320	MOI 31335320	8.0	320	Cannulated
MOI 11336140	MOI 31336140	9.0	140	Cannulated
MOI 11336160	MOI 31336160	9.0	160	Cannulated
MOI 11336180	MOI 31336180	9.0	180	Cannulated
MOI 11336200	MOI 31336200	9.0	200	Cannulated
MOI 11336220	MOI 31336220	9.0	220	Cannulated
MOI 11336240	MOI 31336240	9.0	240	Cannulated
MOI 11336260	MOI 31336260	9.0	260	Cannulated
MOI 11336280	MOI 31336280	9.0	280	Cannulated
MOI 11336300	MOI 31336300	9.0	300	Cannulated
MOI 11336320	MOI 31336320	9.0	320	Cannulated
MOI 11389140	MOI 31389140	10.0	140	Cannulated
MOI 11389160	MOI 31389160	10.0	160	Cannulated
MOI 11389180	MOI 31389180	10.0	180	Cannulated
MOI 11389200	MOI 31389200	10.0	200	Cannulated
MOI 11389220	MOI 31389220	10.0	220	Cannulated
MOI 11389240	MOI 31389240	10.0	240	Cannulated
MOI 11389260	MOI 31389260	10.0	260	Cannulated
MOI 11389280	MOI 31389280	10.0	280	Cannulated
MOI 11389300	MOI 31389300	10.0	300	Cannulated
MOI 11389320	MOI 31389320	10.0	320	Cannulated
MOI 11390140	MOI 31390140	11.0	140	Cannulated
MOI 11390160	MOI 31390160	11.0	160	Cannulated
MOI 11390180	MOI 31390180	11.0	180	Cannulated
MOI 11390200	MOI 31390200	11.0	200	Cannulated
MOI 11390220	MOI 31390220	11.0	220	Cannulated
MOI 11390240	MOI 31390240	11.0	240	Cannulated
MOI 11390260	MOI 31390260	11.0	260	Cannulated
MOI 11390280	MOI 31390280	11.0	280	Cannulated
MOI 11390300	MOI 31390300	11.0	300	Cannulated
MOI 11390320	MOI 31390320	11.0	320	Cannulated



Locking Screw Ø4.0mm

Partially Threaded, for DIVIDE™ Humerus-C Nail

REF (S. S)	REF (TIT)	DIA mm	LENGTH mm
MOI 11513018	MOI 31513018	4.0	18
MOI 11513020	MOI 31513020	4.0	20
MOI 11513022	MOI 31513022	4.0	22
MOI 11513024	MOI 31513024	4.0	24
MOI 11513026	MOI 31513026	4.0	26
MOI 11513028	MOI 31513028	4.0	28
MOI 11513030	MOI 31513030	4.0	30
MOI 11513032	MOI 31513032	4.0	32
MOI 11513034	MOI 31513034	4.0	34
MOI 11513036	MOI 31513036	4.0	36
MOI 11513038	MOI 31513038	4.0	38
MOI 11513040	MOI 31513040	4.0	40
MOI 11513042	MOI 31513042	4.0	42
MOI 11513044	MOI 31513044	4.0	44
MOI 11513046	MOI 31513046	4.0	46
MOI 11513048	MOI 31513048	4.0	48
MOI 11513050	MOI 31513050	4.0	50
MOI 11513052	MOI 31513052	4.0	52
MOI 11513054	MOI 31513054	4.0	54
MOI 11513056	MOI 31513056	4.0	56
MOI 11513058	MOI 31513058	4.0	58
MOI 11513060	MOI 31513060	4.0	60

Locking Screw Ø4.0mm

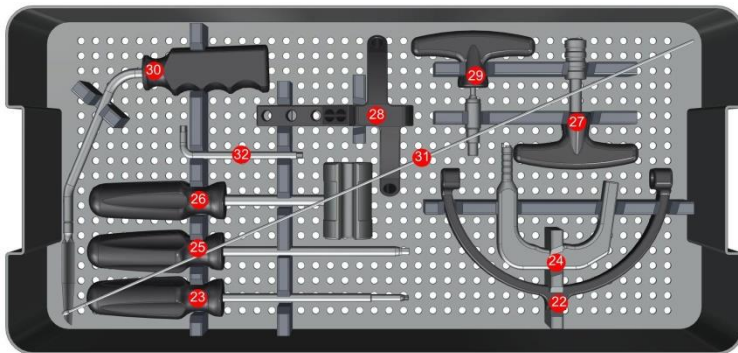
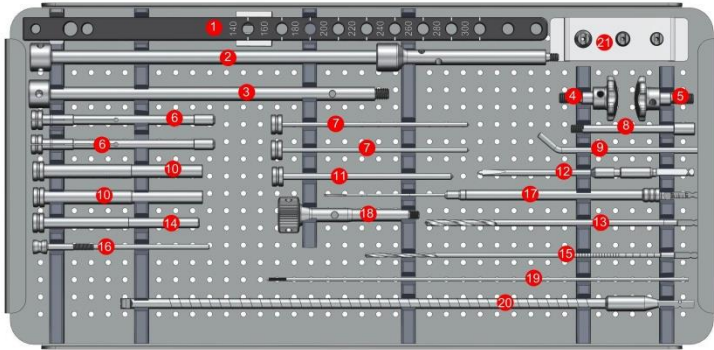
Fully Threaded, for DIVIDE™ Humerus-C Nail

REF (S. S)	REF (TIT)	DIA mm	LENGTH mm
MOI 11510018	MOI 31510018	4.0	18
MOI 11510020	MOI 31510020	4.0	20
MOI 11510022	MOI 31510022	4.0	22
MOI 11510024	MOI 31510024	4.0	24
MOI 11510026	MOI 31510026	4.0	26
MOI 11510028	MOI 31510028	4.0	28
MOI 11510030	MOI 31510030	4.0	30
MOI 11510032	MOI 31510032	4.0	32
MOI 11510034	MOI 31510034	4.0	34
MOI 11510036	MOI 31510036	4.0	36
MOI 11510038	MOI 31510038	4.0	38
MOI 11510040	MOI 31510040	4.0	40
MOI 11510042	MOI 31510042	4.0	42
MOI 11510044	MOI 31510044	4.0	44
MOI 11510046	MOI 31510046	4.0	46
MOI 11510048	MOI 31510048	4.0	48
MOI 11510050	MOI 31510050	4.0	50
MOI 11510052	MOI 31510052	4.0	52
MOI 11510054	MOI 31510054	4.0	54
MOI 11510056	MOI 31510056	4.0	56
MOI 11510058	MOI 31510058	4.0	58
MOI 11510060	MOI 31510060	4.0	60



INSTRUMENTS INFORMATION

DIVIDE Humerus-C Nail Instruments



REF	DESCRIPTION	UNITS
1	MOI 0403001 Connector Arm, for Distal Aiming Arm	1
2	MOI 0403002 Hammer Guide, for Nail Extraction	1
3	MOI 0403003 Connecting Rod, for Nail Insertion	1
4	MOI 0403004 Connecting Wheel Lock M8	1
5	MOI 0403005 Connecting Wheel Lock M6	1
6	MOI 0403006 Drill Sleeve Ø2.8mm	2
7	MOI 0403007 Trocar Ø2.8mm	2
8	MOI 0403008 Connecting Bolt	1
9	MOI 0302014 Pin Wrench	1
10	MOI 0403009 Protection Sleeve Ø10.0/8.0mm	2
11	MOI 0403010 Trocar Ø4.7mm	1
12	MOI 0403011 Position Rod	1
13	MOI 0403012 Drill Bit Ø4.7mm	1
14	MOI 0403013 Drill Sleeve, for Position Rod	1
15	MOI 0403014 Drill Bit Ø2.8mm	1
16	MOI 0403015 Compression Rod	1
17	MOI 0201008 Depth Gauge for Locking Screw	1
18	MOI 0403016 Insertion Screw	1
19	MOI 0403017 Guide Wire Ø2.5X300mm	1
20	MOI 0403018 Flexibal Reamer Shaft	1
21	MOI 0100030 Replaceable Reamer Heads	3

REF	DESCRIPTION	UNITS
22	MOI 0403020 Distal Aiming Arm	1
23	MOI 0403024 Screwdriver Ø4.0mm , Star Drive	1
24	MOI 0403021 Insertion Handle	1
25	MOI 0403022 Screwdriver SW3.5	1
26	MOI 0302025 Sliding Hammer	1
27	MOI 0403028 Quick Coupling T-Handle, Large	1
28	MOI 0403023 Proximal Aiming Arm	1
29	MOI 0403029 Quick Coupling T-Handle, Small	1
30	MOI 0403025 Cannulated Awl	1
31	MOI 0403019 Ball Tip Guide Wire Ø2.5X560mm	1
32	MOI 0100023 Allen Wrench SW5.0	1

REF	DESCRIPTION	UNITS
33	MOI 0403100 Humerus-C Nail Container	



USA OFFICE

4000 Island Blvd, Suite 2704
Aventura, Florida 33160

PUERTO RICO OFFICE

1660 Santa Ana Street
Esq. Fidalgo Diaz,
San Juan, Puerto Rico 00909

E-mail:

info@madisonorthoinc.com

Website:

www.madisonorthoinc.com

