

Introduction

The DONAV™ Locking Clamp-Rod System is a modular implant system and is composed of three components: clamps, rods and locking screws. The rods can be cut to length and contoured in any plane. Standard screws fix the rod to bone via special clamps. Together, these form a unique internal construct that provides great versatility to the surgeon.



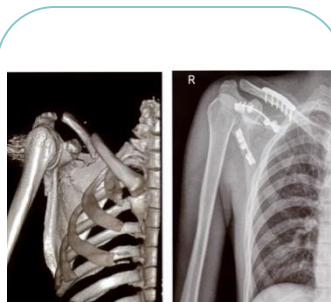
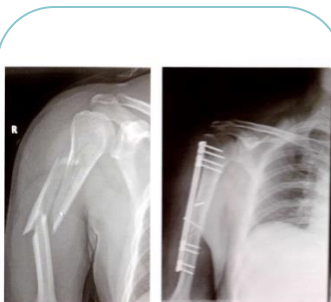
Features and Benefits

- Can be used with open or minimally invasive techniques
- Versatile system requires less inventory
- Rods can be cut to length
- Rods can be contoured in multiple planes for optimal anatomic fit
- Clamps can be positioned anywhere on the rod
- Clamps can be rotated to either side of the rod to allow optimal screw placement



Indications

The DONAV™ Locking Clamp-Rod System is intended for fixation of long bones.

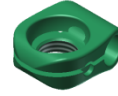


Implant Information



Clamp 2.5, Type-I

REF (TIT)	SIZE mm	TYPE
MOI 37343025	Ø 2.5	One Hole / One Rod



Clamp 3.0, Type-I

REF (TIT)	SIZE mm	TYPE
MOI 37352030	Ø 3.0	One Hole / One Rod



Clamp 2.5, Type-II

REF (TIT)	SIZE mm	TYPE
MOI 37344025	Ø 2.5	Two Holes / One Rod



Clamp 3.0, Type-II

REF (TIT)	SIZE mm	TYPE
MOI 37353030	Ø 3.0	Two Holes / One Rod



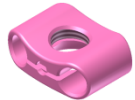
Clamp 2.5, Type-III

REF (TIT)	SIZE mm	TYPE
MOI 37345025	Ø 2.5	One Hole / One Hook



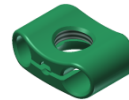
Clamp 3.0, Type-III

REF (TIT)	SIZE mm	TYPE
MOI 37354030	Ø 3.0	One Hole / One Hook



Clamp 2.5, Type-IV

REF (TIT)	SIZE mm	TYPE
MOI 37346025	Ø 2.5	One Hole / Two Rods



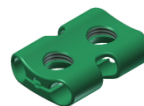
Clamp 3.0, Type-IV

REF (TIT)	SIZE mm	TYPE
MOI 37355030	Ø 3.0	One Hole / Two Rods



Clamp 2.5, Type-V

REF (TIT)	SIZE mm	TYPE
MOI 37347025	Ø 2.5	Two Holes / Two Rods



Clamp 3.0, Type-V

REF (TIT)	SIZE mm	TYPE
MOI 37356030	Ø 3.0	Two Holes / Two Rods



Clamp 2.5, Type-VI

REF (TIT)	SIZE Mm	TYPE
MOI 37348025	Ø 2.5	Two Holes / One Hook



Clamp 3.0, Type-VI

REF (TIT)	SIZE mm	TYPE
MOI 37357030	Ø 3.0	Two Holes / One Hook

Rod, 2.5 mm

REF (TIT)	LENGTH mm
MOI 37349060	60
MOI 37349080	80
MOI 37349100	100
MOI 37349120	120
MOI 37349140	140
MOI 37349160	160

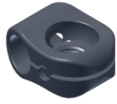


Rod, 3.0 mm

REF (TIT)	LENGTH mm
MOI 37358060	60
MOI 37358080	80
MOI 37358100	100
MOI 37358120	120
MOI 37358140	140
MOI 37358160	160
MOI 37358180	180
MOI 37358200	200
MOI 37358250	250
MOI 37358300	300
MOI 37358350	350



Implant Information



Clamp 4.0, Type-I

REF (TIT)	SIZE mm	TYPE
MOI 37359040	Ø 4.0	One Hole One Rod



Clamp 4.0, Type-II

REF (TIT)	SIZE mm	TYPE
MOI 37360040	Ø 4.0	Two Hole One Rod



Clamp 4.0, Type-III

REF (TIT)	SIZE mm	TYPE
MOI 37361040	Ø 4.0	One Hole / One Hook



Clamp 4.0, Type-IV

REF (TIT)	SIZE mm	TYPE
MOI 37362040	Ø 4.0	One Hole / Two Rods



Clamp 4.0, Type-V

REF (TIT)	SIZE mm	TYPE
MOI 37363040	Ø 4.0	Two Holes / Two Rods



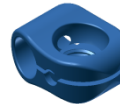
Clamp 4.0, Type-VI

REF (TIT)	SIZE mm	TYPE
MOI 37364040	Ø 4.0	Two Holes / One Hook



Rod, 4.0 mm

REF (TIT)	LENGTH mm
MOI 37365080	80
MOI 37365100	100
MOI 37365120	120
MOI 37365140	140
MOI 37365160	160
MOI 37365180	180
MOI 37365200	200
MOI 37365250	250
MOI 37365300	300
MOI 37365350	350



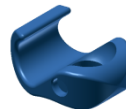
Clamp 5.0, Type-I

REF (TIT)	SIZE mm	TYPE
MOI 37367050	Ø 5.0	One Hole One Rod



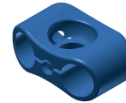
Clamp 5.0, Type-II

REF (TIT)	SIZE mm	TYPE
MOI 37368050	Ø 5.0	Two Hole One Rod



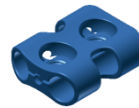
Clamp 5.0, Type-III

REF (TIT)	SIZE mm	TYPE
MOI 37369050	Ø 5.0	One Hole One Hook



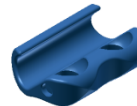
Clamp 5.0, Type-IV

REF (TIT)	SIZE mm	TYPE
MOI 37370050	Ø 5.0	One Hole Two Rod



Clamp 5.0, Type-V

REF (TIT)	SIZE mm	TYPE
MOI 37371050	Ø 5.0	Two Hole Two Rod



Clamp 5.0, Type-VI

REF (TIT)	SIZE mm	TYPE
MOI 37372050	Ø 5.0	Two Hole One Hook



Rod, 5.0 mm

REF (TIT)	LENGTH mm
MOI 37373120	120
MOI 37373140	140
MOI 37373160	160
MOI 37373180	180
MOI 37373200	200
MOI 37373220	220
MOI 37373240	240
MOI 37373260	260
MOI 37373280	280
MOI 37373300	300
MOI 37373320	320
MOI 37373340	340
MOI 37373360	360

Implant Information



Clamp 6.0, Type-I

REF (TIT)	SIZE mm	TYPE
MOI 37376060	Ø 6.0	One Hole / One Rod



Clamp 6.0, Type-II

REF (TIT)	SIZE mm	TYPE
MOI 37377060	Ø 6.0	Two Holes / One Rod



Clamp 6.0, Type-III

REF (TIT)	SIZE mm	TYPE
MOI 37378060	Ø 6.0	One Hole / One Hook



Clamp 6.0, Type-IV

REF (TIT)	SIZE mm	TYPE
MOI 37379060	Ø 6.0	One Hole / Two Rods



Clamp 6.0, Type-V

REF (TIT)	SIZE mm	TYPE
MOI 37380060	Ø 6.0	Two Holes / Two Rods



Clamp 6.0, Type-VI

REF (TIT)	SIZE mm	TYPE
MOI 37381060	Ø 6.0	Two Holes / One Hook



Rod, 6.0 mm

REF (TIT)	LENGTH mm
MOI 37382140	140
MOI 37382160	160
MOI 37382180	180
MOI 37382200	200
MOI 37382220	220
MOI 37382240	240
MOI 37382260	260
MOI 37382280	280
MOI 37382300	300
MOI 37382320	320
MOI 37382340	340
MOI 37382360	360
MOI 37382380	380
MOI 37382400	400

Cortex Screw, 5.0 mm



REF (TIT)	LENGTH mm	REF (TIT)	LENGTH mm
MOI 37383018	18	MOI 37383044	44
MOI 37383020	20	MOI 37383046	46
MOI 37383022	22	MOI 37383048	48
MOI 37383024	24	MOI 37383050	50
MOI 37383026	26	MOI 37383052	52
MOI 37383028	28	MOI 37383054	54
MOI 37383030	30	MOI 37383056	56
MOI 37383032	32	MOI 37383058	58
MOI 37383034	34	MOI 37383060	60
MOI 37383036	36	MOI 37383065	65
MOI 37383038	38	MOI 37383070	70
MOI 37383040	40	MOI 37383075	75
MOI 37383042	42	MOI 37383080	80



Locking Screw, 5.0 mm

REF (TIT)	LENGTH mm	REF (TIT)	LENGTH mm
MOI 37384018	18	MOI 37384044	44
MOI 37384020	20	MOI 37384046	46
MOI 37384022	22	MOI 37384048	48
MOI 37384024	24	MOI 37384050	50
MOI 37384026	26	MOI 37384052	52
MOI 37384028	28	MOI 37384054	54
MOI 37384030	30	MOI 37384056	56
MOI 37384032	32	MOI 37384058	58
MOI 37384034	34	MOI 37384060	60
MOI 37384036	36	MOI 37384065	65
MOI 37384038	38	MOI 37384070	70
MOI 37384040	40	MOI 37384075	75
MOI 37384042	42	MOI 37384080	80

Implant Information

Cortex Screw, 3.5 mm



REF (TIT)	LENGTH mm
MOI 37350012	12
MOI 37350014	14
MOI 37350016	16
MOI 37350018	18
MOI 37350020	20
MOI 37350022	22
MOI 37350024	24
MOI 37350026	26

Locking Screw, 3.0 mm



REF (TIT)	LENGTH mm
MOI 37351012	12
MOI 37351014	14
MOI 37351016	16
MOI 37351018	18
MOI 37351020	20
MOI 37351022	22
MOI 37351024	24
MOI 37351026	26

Cortex Screw, 4.0 mm



REF (TIT)	LENGTH mm	REF (TIT)	LENGTH mm
MOI 37374018	18	MOI 37374040	40
MOI 37374020	20	MOI 37374042	42
MOI 37374022	22	MOI 37374044	44
MOI 37374024	24	MOI 37374046	46
MOI 37374026	26	MOI 37374048	48
MOI 37374028	28	MOI 37374050	50
MOI 37374030	30	MOI 37374052	52
MOI 37374032	32	MOI 37374054	54
MOI 37374034	34	MOI 37374056	56
MOI 37374036	36	MOI 37374058	58
MOI 37374038	38	MOI 37374060	60



Locking Screw, 3.5 mm

REF (TIT)	LENGTH mm	REF (TIT)	LENGTH mm
MOI 37366012	12	MOI 37366032	32
MOI 37366014	14	MOI 37366034	34
MOI 37366016	16	MOI 37366036	36
MOI 37366018	18	MOI 37366038	38
MOI 37366020	20	MOI 37366040	40
MOI 37366022	22	MOI 37366042	42
MOI 37366024	24	MOI 37366044	44
MOI 37366026	26	MOI 37366046	46
MOI 37366028	28	MOI 37366048	48
MOI 37366030	30	MOI 37366050	50

Locking Screw, 4.5 mm



REF (TIT)	LENGTH mm	REF (TIT)	LENGTH mm
MOI 37375018	18	MOI 37375040	40
MOI 37375020	20	MOI 37375042	42
MOI 37375022	22	MOI 37375044	44
MOI 37375024	24	MOI 37375046	46
MOI 37375026	26	MOI 37375048	48
MOI 37375028	28	MOI 37375050	50
MOI 37375030	30	MOI 37375052	52
MOI 37375032	32	MOI 37375054	54
MOI 37375034	34	MOI 37375056	56
MOI 37375036	36	MOI 37375058	58
MOI 37375038	38	MOI 37375060	60



USA OFFICE

4000 Island Blvd, Suite 2704
Aventura, Florida 33160

PUERTO RICO OFFICE

1660 Santa Ana Street
Esq. Fidalgo Diaz,
San Juan, Puerto Rico 00909

E-mail:

info@madisonorthoinc.com

Website:

www.madisonorthoinc.com

