

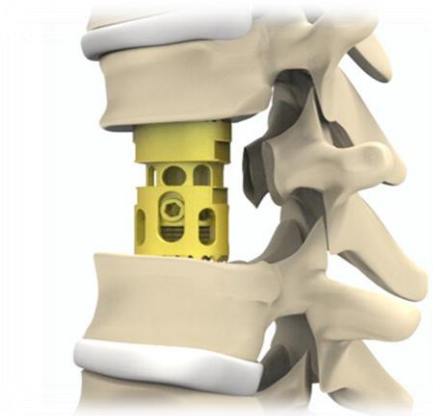
PRIMA™ VBR

Vertebral Body Replacement System

System Overview

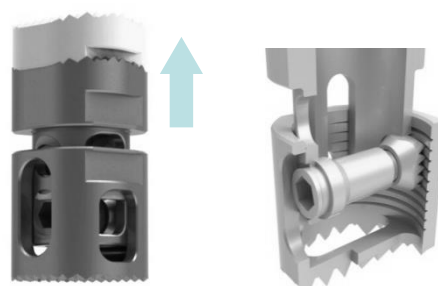
The PRIMA™ Vertebral Body Replacement System is designed to replace the vertebral body at the thoracic or lumbar level. The system consists of a titanium alloy Distractable In Situ implant, which enables the surgeon to customize the height of the implant after implantation. Adjustments of the implant height are achieved in situ as a result of the locking mechanism which maintains distraction.

The implant has the main advantage of being easy to use and perfectly adjustable to the patient's anatomy. Its adjustment allows a positioning in kyphosis as well as in lordosis by lateral or median approach.



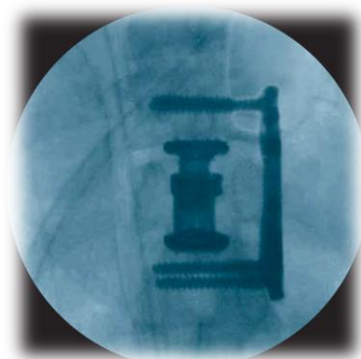
Implant Features

- Safe support and anchorage in the in-built vertebral endplates respect the adjacent vertebrae.
- In situ distraction allows precise adjustment of the implant height.
- Secure locking mechanism maintains the distracted implant height (1mm increment).
- Large graft areas improve fusion rate.
- Easy and quick set-up system.

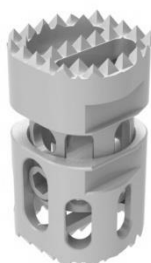


Indications for Use

Indications include pathologies which require vertebral reconstruction. The best indication remains for the vertebral tumoral disease with the need of rehabilitation after a corpectomy. It can also be used for degenerative and anterior traumatic diseases. It can also be associated to a bone graft inside and around the implant.



Implant Information [Material in Titanium Alloy (Ti-6Al-4V)]

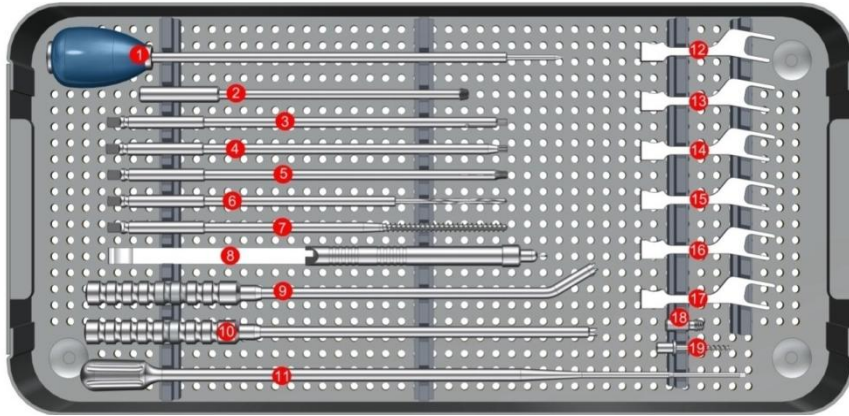


PRIMA™ VBR Device

| REF (TIT) | Diameters (MM) | Sizes |
|--------------|----------------|--------|
| MOI VBR001T | 15 | Small |
| MOI VBR002T | 15 | Medium |
| MOI VBR003T | 15 | Large |
| MOI VBR001TL | 20 | Small |
| MOI VBR002TL | 20 | Medium |
| MOI VBR003TL | 20 | Large |

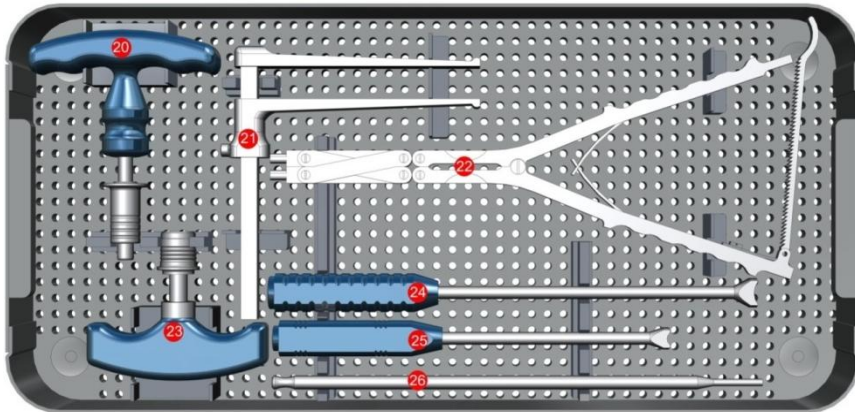
PRIMA™

VBR Cage and Thoracolumbar Spine Locking Plate System



Instrument Set Details

| REF CODE | DESCRIPTION | UNITS |
|------------|---|-------|
| 1 3100016 | Awl, Ø3.3 mm | 1 |
| 2 3100015 | TSLP Plate Holder | 1 |
| 3 3100023 | Tightening Screwdriver Shaft SW4.5 | 1 |
| 4 3100022 | Selfholding Screwdriver Shaft SW4.5 | 1 |
| 5 3100021 | Driver SW4.0, for Threaded Drill Guide & Fixation Pin | 1 |
| 6 3100018 | Drill Bit, Ø3.3mm | 2 |
| 7 3100017 | Tap for Cancellous Bone Screws Ø5.5mm | 1 |
| 8 1700008 | Depth Gauge | 1 |
| 9 3100014 | Forked Impactor, Angled | 1 |
| 10 3100013 | Forked Impactor, Straight | 1 |
| 11 3100010 | Screwdriver SW2.5, for VBR Implant | 1 |
| 12 3100001 | Tips for Parallel Distractor, 12L | 1 |
| 13 3100002 | Tips for Parallel Distractor, 12R | 1 |
| 14 3100003 | Tips for Parallel Distractor, 15L | 1 |
| 15 3100004 | Tips for Parallel Distractor, 15R | 1 |
| 16 3100005 | Tips for Parallel Distractor, 20L | 1 |
| 17 3100006 | Tips for Parallel Distractor, 20R | 1 |
| 18 3100020 | Threaded Drill Guide | 4 |
| 19 3100019 | Temporary Fixation Pin | 2 |



| REF CODE | DESCRIPTION | UNITS |
|------------|-------------------------------------|-------|
| 20 3100025 | Torque-limiting T-Handle, 7NM | 1 |
| 21 3100007 | Inter Vertebral Measuring Device | 1 |
| 22 3100009 | Parallel Distractor for VBR Implant | 1 |
| 23 3100024 | Quick Coupling T-Handle | 1 |
| 24 3100011 | Impactor, Crescent, Large | 1 |
| 25 3100012 | Impactor, Crescent, Small | 1 |
| 26 3100008 | Graft Pusher | 1 |



USA OFFICE

4000 Island Blvd, Suite 2704
Aventura, Florida 33160

PUERTO RICO OFFICE

1660 Santa Ana Street
Esq. Fidalgo Diaz,
San Juan, Puerto Rico 00909

E-mail:

info@madisonorthoinc.com

Website:

www.madisonorthoinc.com

